



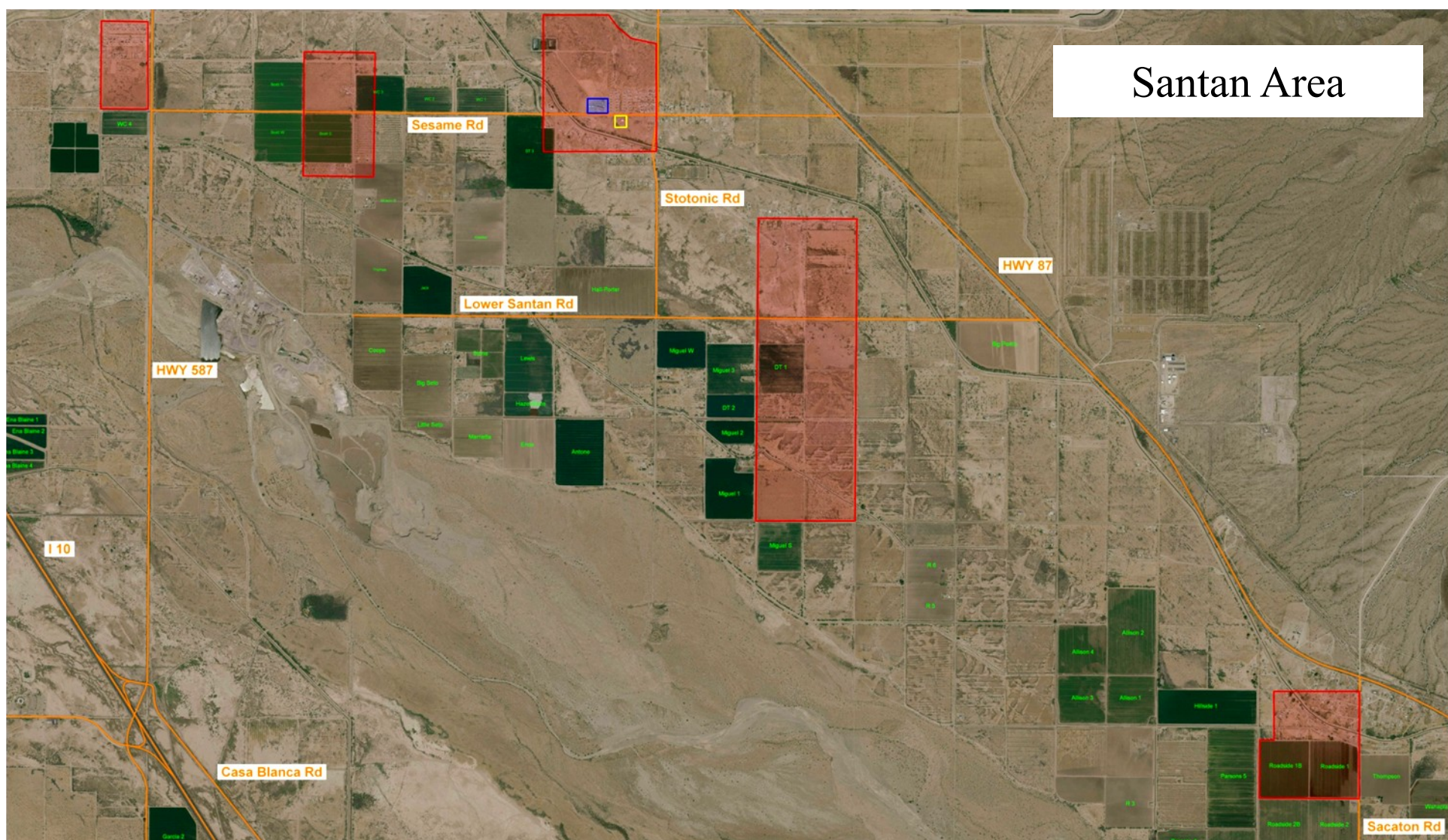
PESTICIDE MANAGEMENT AREAS

The Pesticide Code, prohibits aerial **pesticide** applications by fixed-wing aircraft within a Pesticide Management Area (PMA.) A grower who has fields located within a PMA must request an emergency exemption to apply pesticides by fixed-wing aircraft within the PMA. The Department of Environmental Quality Director must approve the exemption before the application can take place.

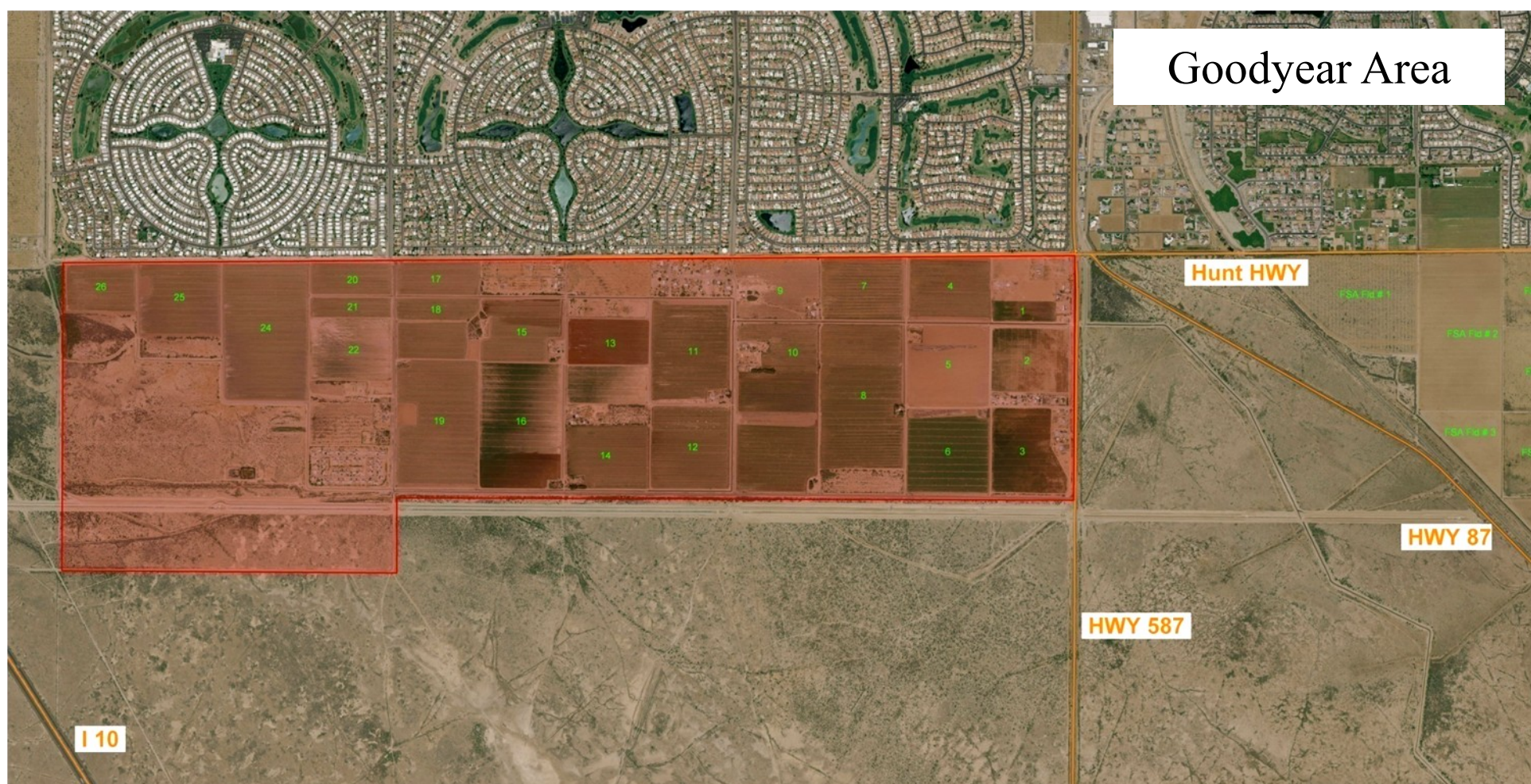
Below are maps detailing the PMAs located within District Four. For more information or to report a pesticide related incident, please contact the Pesticide Control Office at:

(520) 562-2234

Or on the web at: www.GRICDEQ.org



Santan Area



Goodyear Area

- GRIC boundaries
- School-no fly zone
- PMA-No fixed-wing aerial pesticide applications
- Medical facility- no fly zone
- Roads,Highways