



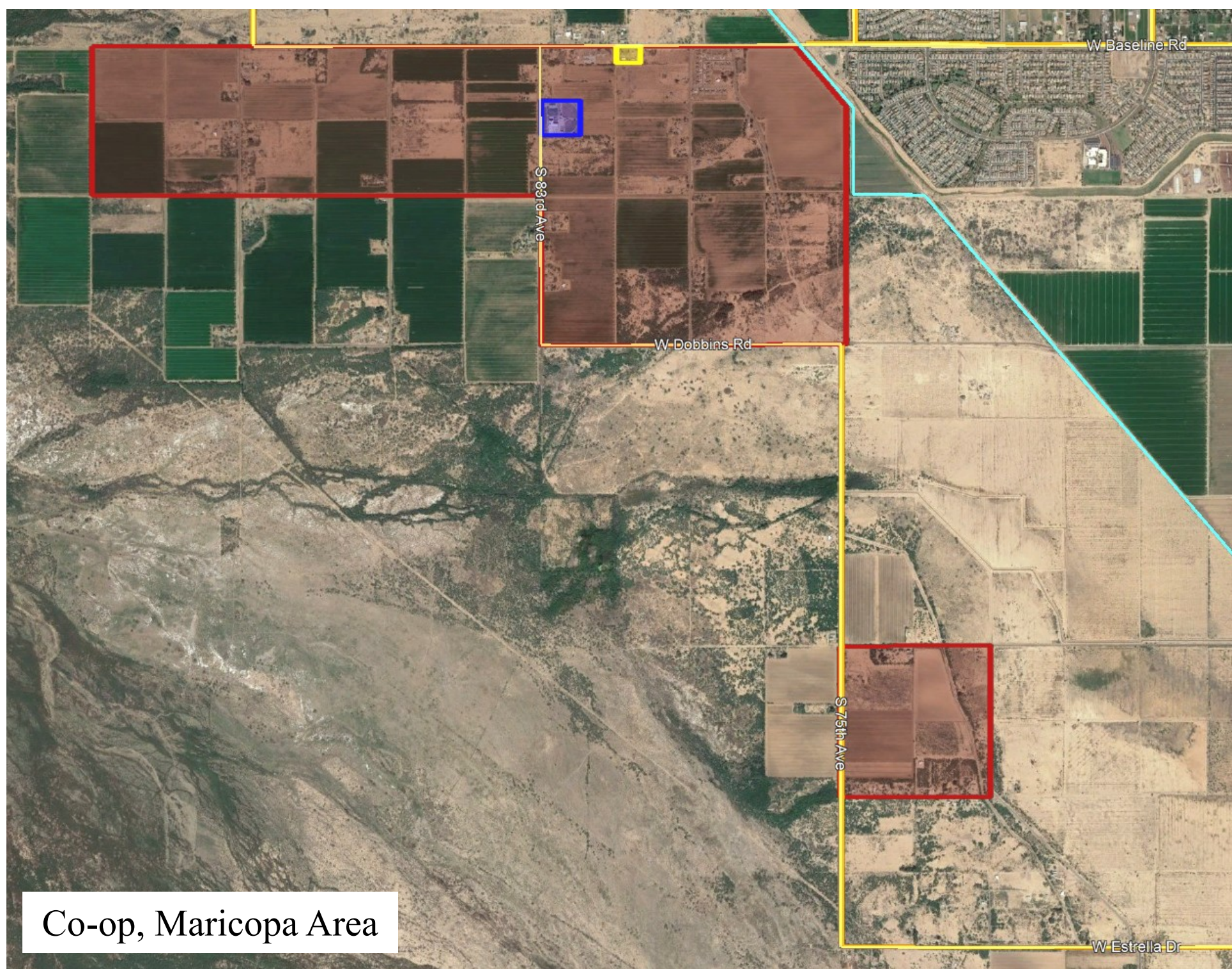
PESTICIDE MANAGEMENT AREAS

The Pesticide Code, prohibits aerial **pesticide** applications by fixed-wing aircraft within a Pesticide Management Area (PMA.) A grower who has fields located within a PMA must request an emergency exemption to apply pesticides by fixed-wing aircraft within the PMA. The Department of Environmental Quality Director must approve the exemption before the application can take place.

Below is a map detailing the PMAs located within District Seven. For more information or to report a pesticide related incident, please contact the Pesticide Control Office at:

(520) 562-2234

Or on the web at: www.GRICDEQ.org



Co-op, Maricopa Area

- | | | |
|-------------------------------|--------------------|---|
| GRIC boundaries | School-no fly zone | PMA-No fixed-wing aerial pesticide applications |
| Medical facility- no fly zone | Roads,Highways | |